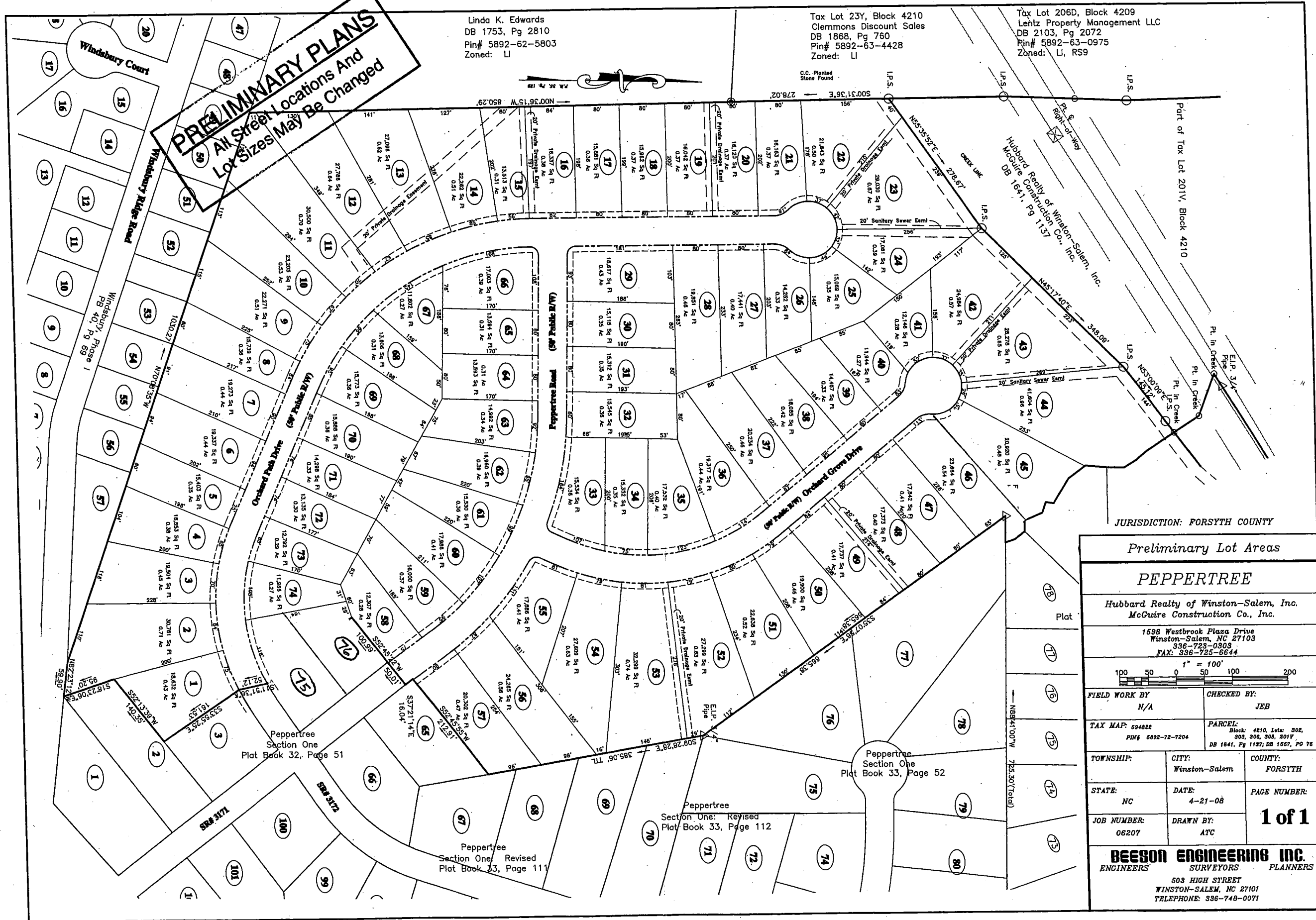


PRELIMINARY PLANS
 All Street Locations And
 Lot Sizes May Be Changed

Linda K. Edwards
 DB 1753, Pg 2810
 Pin# 5892-62-5803
 Zoned: LI

Tax Lot 23Y, Block 4210
 Clemmons Discount Sales
 DB 1868, Pg 760
 Pin# 5892-63-4428
 Zoned: LI

Tax Lot 206D, Block 4209
 Lehtz Property Management LLC
 DB 2103, Pg 2072
 Pin# 5892-63-0975
 Zoned: LI, RS9



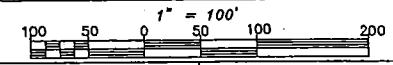
JURISDICTION: FORSYTH COUNTY

Preliminary Lot Areas

PEPPERTREE

Hubbard Realty of Winston-Salem, Inc.
 McGuire Construction Co., Inc.

1598 Westbrook Plaza Drive
 Winston-Salem, NC 27103
 336-725-0303
 FAX: 336-725-6644



FIELD WORK BY: N/A

CHECKED BY: JEB

TAX MAP: 694822
 PIN# 6092-72-7204

PARCEL: Block: 4210, Lot: 302, 303, 306, 308, 201V
 DB 1841, Pg 1137; DB 1657, Pg 75

TOWNSHIP: CITY: Winston-Salem COUNTY: FORSYTH

STATE: NC DATE: 4-21-08 PAGE NUMBER:

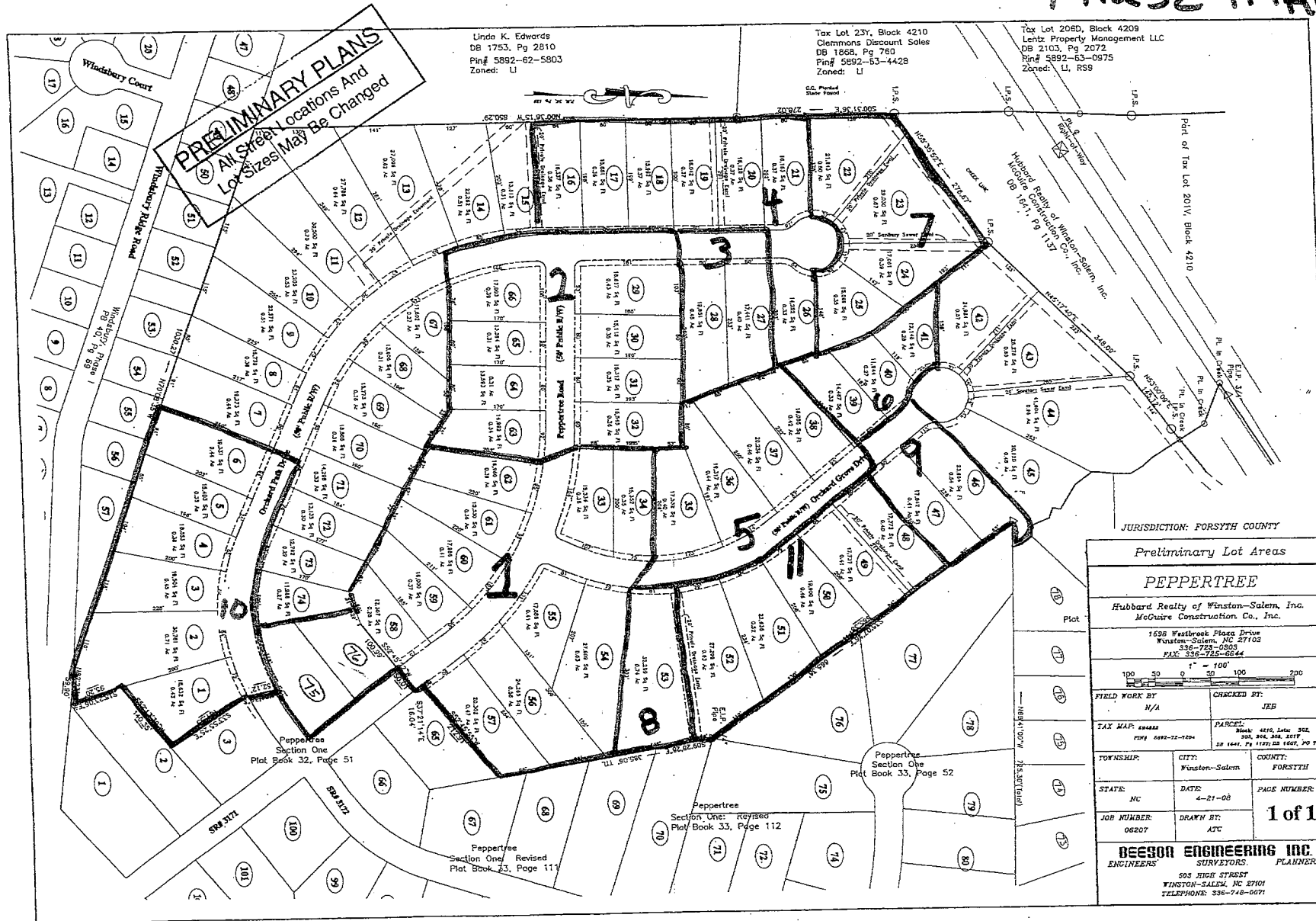
JOB NUMBER: 06207 DRAWN BY: ATC

1 of 1

BEESON ENGINEERING INC.
 ENGINEERS SURVEYORS PLANNERS
 503 HIGH STREET
 WINSTON-SALEM, NC 27101
 TELEPHONE: 336-748-0071

Preliminary Plat - NOT TO BE USED FOR SALES, RECORDATION OR CONVEYANCE

PEPPERTREE SECTION IV PHASE MAP



| | | |
|--|---------------|----------------------------------|
| Preliminary Lot Areas | | |
| PEPPERTREE | | |
| Hubbard Realty of Winston-Salem, Inc. McGuire Construction Co., Inc. | | |
| 1608 Westbrook Plaza Drive Winston-Salem, NC 27103 336-723-0905 FAX: 336-723-0944 | | |
| 1" = 100' | | |
| FIELD WORK BY | CHECKED BY: | |
| N/A | JEB | |
| TAX MAP: 68484 | PARCEL: | Block: 4210, Lot: 302 |
| 1999 6892-72-1204 | | 201, 206, 208, 211P |
| | | DB 1441, Pg 1137; DB 1607, Pg 74 |
| TOWNSHIP: | CITY: | COUNTY: |
| | Winston-Salem | FORSYTH |
| STATE: NC | DATE: 4-21-08 | PAGE NUMBER: |
| JOB NUMBER: 06207 | DRAWN BY: ATC | 1 of 1 |
| BEESON ENGINEERING INC. | | |
| ENGINEERS SURVEYORS PLANNERS | | |
| 505 HERR STREET WINSTON-SALEM, NC 27101 TELEPHONE: 336-748-0071 | | |

Preliminary Plan - NOT TO BE USED FOR SALES, RECORDATION OR CONVEYANCE