

VICINITY MAP  
N.T.S.

# LWE

LATHAM-WALTERS  
ENGINEERING, INC.  
N.C. CORP. LIC. C-1815  
16507-A NORTHCROSS DRIVE  
HUNTERSVILLE, N.C. 28078  
PHONE: (704) 895-8484  
FAX: (704) 237-4362



MEADOWLANDS  
DEVELOPMENT, LLC

P.O. BOX 10  
BETHANIA, N.C. 27010  
PHONE: (336) 922-4000  
FAX: (336) 922-1762  
peteramey@earthlink.net

MEADOWLANDS SUBDIVISION  
THE HERITAGE

WALLBURG, DAVIDSON CO., N.C.

PRELIMINARY MARKETING PLAN

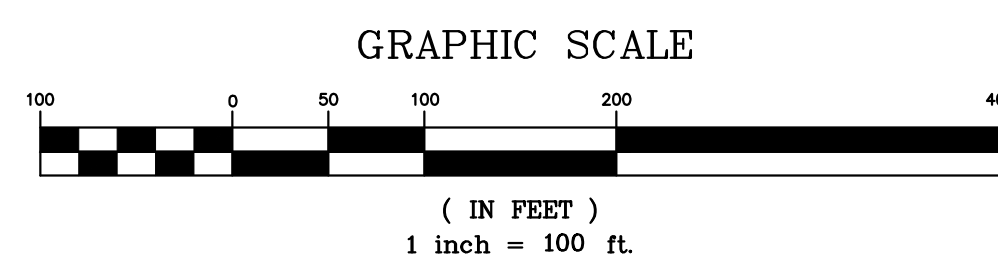
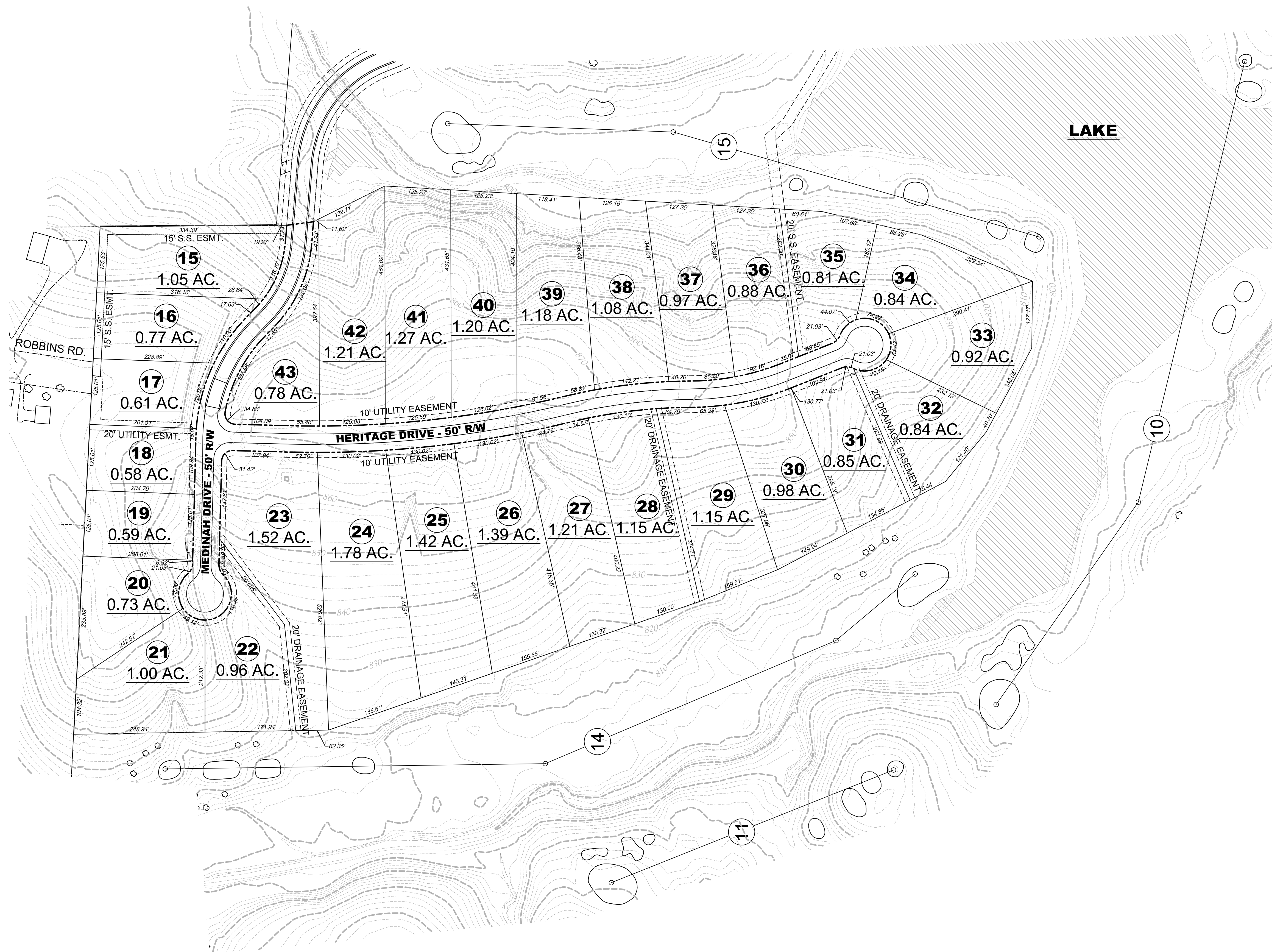
ALL INFORMATION IS CONCEPTUAL AND SUBJECT TO CHANGE WITHOUT NOTICE

REVISIONS

PROJECT NO.: 2014.44  
SCALE: 1" = 100'  
DRAWN BY: MRH  
CHECKED BY: JLW

SHEET NO.

# C1.0



Know what's below.  
Call before you dig.

- 1). CONTRACTOR IS FULLY RESPONSIBLE FOR CONTACTING APPROPRIATE PARTIES AND ASSURING THAT EXISTING UTILITIES ARE LOCATED PRIOR TO BEGINNING CONSTRUCTION.
- 2). CONTRACTOR IS RESPONSIBLE FOR PLACING BARRICADES USING FLAGMEN, ETC., AS NECESSARY TO INSURE SAFETY TO THE PUBLIC.
- 3). ALL PAVEMENT CUTS, CONCRETE OR ASPHALT, ARE TO BE REPLACED ACCORDING TO STANDARDS OF THE NORTH CAROLINA DEPARTMENT OF TRANSPORTATION.
- 4). SHORING WILL BE ACCORDING TO OSHA TRENCHING STANDARDS PART 1926 SUBPART P, OR AS AMENDED.